

www.datcosports.com

Polo's



Oxford Dress Shirts

Hats



HiRISE

MERCHANDISE



HiRISE

Mars Reconnaissance Orbiter

Actual Artwork

Datco Sports Inc.

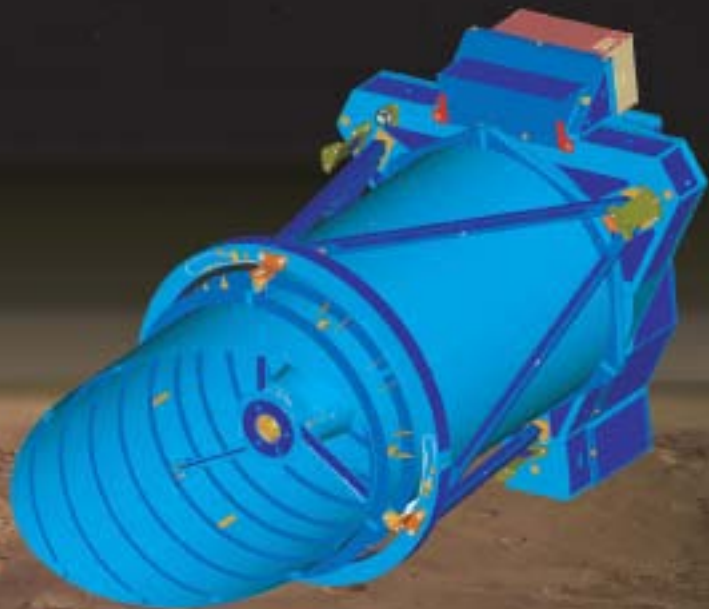


Mars Reconnaissance Orbiter

HiRISE

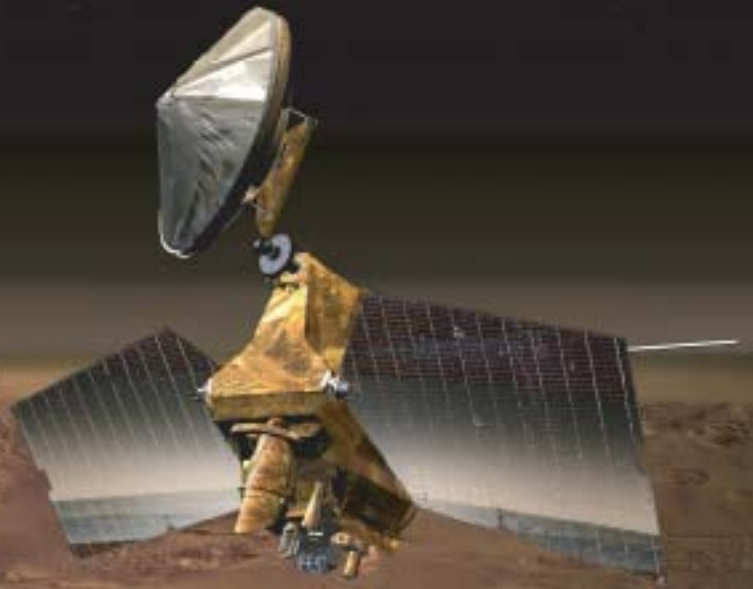
High Resolution Imaging Science Experiment

Tee Shirt Front



Mars Reconnaissance Orbiter

Tee Shirt Back





Sports

Welcome to the Datco Sports Individual Program presentation.

The following will help you and your team to easily order and receive high quality apparel and accessories adorned with your company's or project's logo. To get started, please provide a point of contact within your work group or company that is able to collect individual order forms and distribute finished orders. Next, provide Datco with a high quality image or print of your desired logo. Logos with Trade Mark or Copy Rights, please provide written permission for use. Complex and detailed logos will affect pricing of each item offered. After the P.O.C. and logo are established, a presentation with images of logos , offered apparel and order forms will be provided by e-mail or CD. The employee or team member can then print and fill out the order form with his/her individual order for the point of contact to collect. The point of contact can then pick a self determined deadline for collection of individual order forms to be mail to Datco. Turn around times will start from when Datco receives your groups orders. When your order arrives the individual orders will be separatly packaged with a copy of the order form attached. The order can then be easily distributed by the point of contact.

Payment:

Please attach checks to individual order forms payable to
DATCO SPORTS INC.

Credit Card Call: 1-888-22DATCO

Shipping:

Group Orders over \$300.00 shipped to same destination = Free Shipping
Orders \$12.00 to \$150.00 = \$8.00 Orders \$151 to \$299.00 = \$16.00

Offered Colors and Sizes:

Datco will keep an inventory of offered colors and sizes to provide a shorter lead time for up coming meetings, last minute orders or just need it sooner.
Allow 4 Weeks Lead Time from when Datco receives your order form.

Available Colors and Sizes:

Datco will provide all the colors and sizes that the garment is available in.
Allow 10 Weeks Lead Time from when Datco receives your order form.
Datco has a selection of every type of garment in many colors.
If your team desires are different from what is offered, please visit

www.datcosports.com

or contact us for mailed catalog at:

1-888-22DATCO

datcosports@Comcast.net

Holiday Orders:

To receive orders before Dec. 25 Datco must receive order forms by Thanksgiving Day

Send Orders To:

DATCO SPORTS INC.
14932 W. 145th Street
Olathe, Kansas 66062





Oxford

Our Classic Oxford is easy care with a great traditional look. Feels smooth and the tone is exceptionally rich
4.3-Ounce, 60/40 cotton/poly; long and short sleeve, back pleat, button-down collar, button-through sleeve plackets, pearlized buttons; patch pocket,

Offered Sizes: XS - 2XL

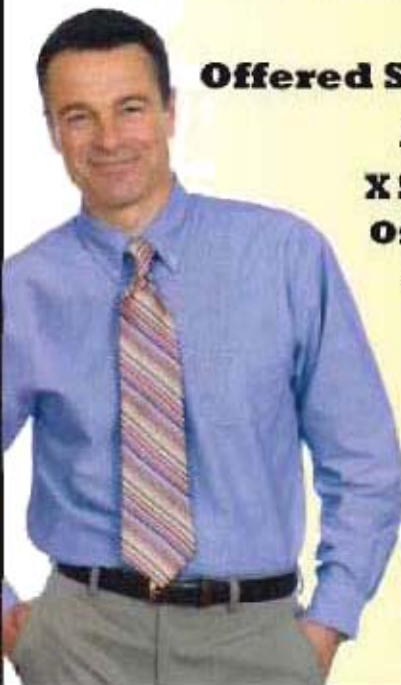
Available Sizes

X Small to 6XLarge

Offered Colors

Light Blue

White



Polo

Heavyweight fabric delivers long-lasting wear, yet thanks to being garment washed it's surprisingly soft and doesn't shrink.

7 - ounce heavyweight pique, 100% ring spun combed cotton, garment washed; welt collar and cuffs, double-needle stitched, side vents, locker patch; horn tone buttons.

ADULT SIZES: XS - 6XL

Offered Colors

Navy Blue

Steel Grey

Available Colors

Red, Light Blue, Yellow,

Seaform, White,

Pistachio, Ivory,

Ash, Faded Blue,

Faded Olive, Bugundy,

Forest, Black, Purple.

Offered Sizes

Small to 2XLarge

Available Sizes

X Small to 6XLarge

Available Colors in

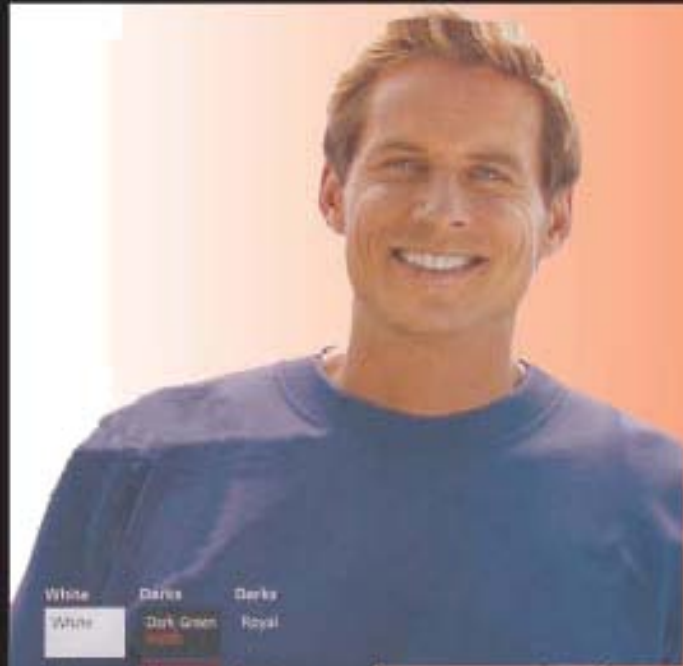
Tall Sizes

White, Black, Navy

XSMALL to 6XLARGE

Offered Colors and Sizes: 4 Week Lead Time (from Datco receiving your order form)

Available Colors and Sizes: 10 Week Lead time (from Datco receiving your order form)



Offered Colors and Sizes:

4 Week Lead Time (from Datco receiving your order form)

Available Colors and Sizes:

10 Week Lead time (from Datco receiving your order form)

Crew Neck Sweat Shirt

9-Ounce, 50/50 cotton/poly fleece; coverscamed neck, armholes, and waistband; spandex in collar; cuffs and waistband; set-in sleeves

Offered Sizes

S - 2XL

Offered Colors

Navy Blue and Ash

Available Colors

Lt. Steel, Black, Brown, Daffodil Yellow, Deep Navy, Deep Royal, Denim, Forest, Lt. Blue, Pale Pink, Purple, Red, Royal Stonewashed Green

| | | |
|---------------|------------|--------------|
| White | Darks | Darks |
| White | Dark Green | Royal |
| Lights | Maroon | Premiums |
| Ash | Navy | Forest Green |
| Neutral (2XL) | Orange | |
| Darks | Purple | |
| Dark Green | Red | |
| Black | | |

Available Sizes

Small to 4XLarge

Denim Shirt

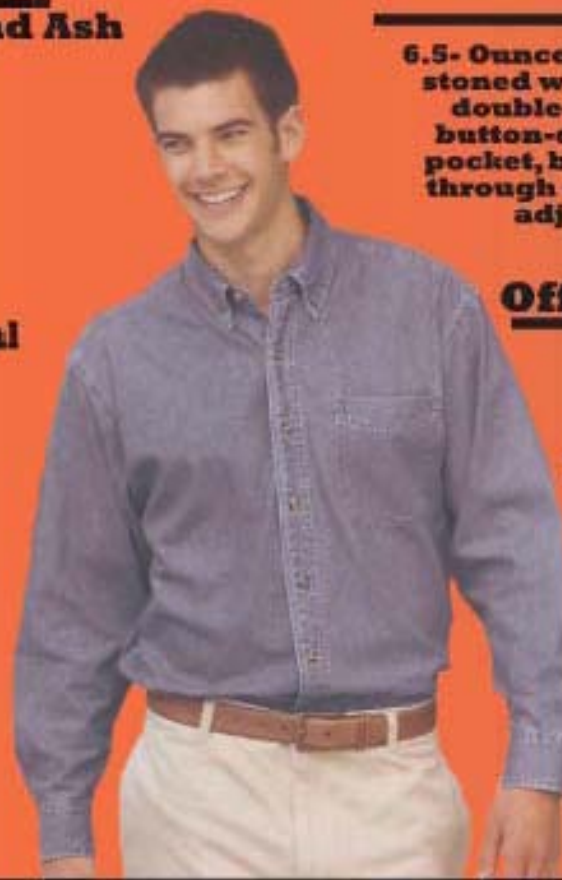
6.5- Ounce, 100% cotton denim, stoned washed; long sleeve, double- needle stitched, button-down collar, patch pocket, back pleat, button-through sleeve placket and adjustable cuffs

Offered Sizes

S - 2XL

Available Sizes

X Small to 6XLarge and in TALL Sizes



Sports

datcosports@comcast.net

www.datcosports.com

1-888-22DATCO



Button Front Pique Shirt

Classic styling fit for a women;
seven dyed - to - match pearlized buttons

6.8 - ounce, 100% combed cotton pique,
welt collar and cuffs, top - stitched with
round - hemmed bottom.

Offered Sizes

S - 2XL

Offered Colors

Bimini Blue

Butter

Available Colors

Lavender

White

Bright Red

Navy

Black



Sports



Rib Scoop-Neck Tee

100% preshrunk ringspun cotton
(Heather Grey 90/10 Cotton /Poly)
6.0 Ounce Bound-on self - trim
neck and sleeve hem. Cap sleeve,
fitted silhouette, side seamed,
double - needle bottom hem.

Offered Sizes

S - 2XL

Offered Colors

White

Black

Available Colors

Carol Blue, Chocolate,

Frost Pink, Frost Sky

Heather Grey, Hot Pink,

Navy, Red, Yellow Haze

Aloe



Constructed Cap

Med - Profile
6- Panel Brushed Twill Cap; 100% cotton, fused buckram backing, sewn eyelets, precurved bill has 4 - row stitching; sweatband with 4 - needle topstitching; Fabric closure with brass buckle and interior hidden brass grommet closure
One size fits all

Offered Colors

Navy Blue

Available Colors

Black, White, Khaki, Red
Natural/Ivy, Natural/Navy
Natural Black



Unconstructed Cap

Low - Profile
6- Panel Twill Cap; 100% cotton, 2 metal grommets on the side panels, precurved bill has 4 - row stitching; Matching - color sweatband with 4 - needle topstitching; Fabric closure with brass buckle and interior hidden brass grommet closure
One size fits all

Offered Colors

Navy Blue

Available Colors

Black, White, Red, Wheat
Burnt Orange,
Columbia Blue



Sports

datcosports@comcast.net

www.datcosports.com

1-888-22DATCO

MEN'S ORDER FORM



HiRISE

☒☒ DATCO SPORTS INC ☒ www.datcosports.com ☒ datcosports@comcast.net ☒ 1-888-22DATCO ☒☒

| POLO | XS \$32.00 | S \$32.00 | M \$32.00 | L \$32.00 | XL \$32.00 | 2XL \$32.00 | 3XL \$33.00 | 4XL \$35.00 | 5XL \$40.00 | 6XL \$40.00 | TOTAL |
|--|---------------|--------------|--------------|--------------|---------------|----------------|----------------|----------------|----------------|----------------|-------|
| NAVY | | | | | | | | | | | \$ |
| STEEL GRAY | | | | | | | | | | | \$ |
| | | | | | | | | | | | \$ |
| Available Colors: Red, Lt. Blue, Yellow, Seafoam, White, Pistachio, Ivory, Ash, Fade Blue, Faded Olive, Burgundy, Forest, Black and Purple | | | | | | | | | | | |

| Oxford L.S. | \$32.00 | \$32.00 | \$32.00 | \$32.00 | \$32.00 | \$32.00 | \$33.00 | \$35.00 | TOTAL | | | |
|-------------|---------|---------|---------|---------|---------|---------|---------|---------|-------|--|--|----|
| WHITE | | | | | | | | | | | | \$ |
| LT BLUE | | | | | | | | | | | | \$ |

| Oxford S.S. | \$32.00 | \$32.00 | \$32.00 | \$32.00 | \$32.00 | \$32.00 | \$33.00 | \$35.00 | TOTAL | | | |
|-------------|---------|---------|---------|---------|---------|---------|---------|---------|-------|--|--|----|
| WHITE | | | | | | | | | | | | \$ |
| LT BLUE | | | | | | | | | | | | \$ |

| Crew Neck Sweat Shirt | \$25.00 | \$25.00 | \$25.00 | \$25.00 | \$25.00 | \$29.00 | \$29.00 | \$31.00 | TOTAL | | | |
|-----------------------|---------|---------|---------|---------|---------|---------|---------|---------|-------|--|--|----|
| NAVY | | | | | | | | | | | | \$ |
| Ash | | | | | | | | | | | | \$ |
| | | | | | | | | | | | | \$ |

Available Colors: Lt. Steel, Black, Brown, Daffodil Yellow, Deep Navy, Deep Royal, Denim, Forest, Lt. Blue, Pale Pink Purple Red, Royal, Stonewashed Green

| DENIM SHIRT | \$32.00 | \$32.00 | \$32.00 | \$32.00 | \$32.00 | \$32.00 | \$33.00 | \$35.00 | \$40.00 | \$40.00 | TOTAL |
|-------------|---------|---------|---------|---------|---------|---------|---------|---------|---------|---------|-------|
| LT BLUE | | | | | | | | | | | \$ |

| Structured | Navy | Black | White | Khaki | Red | Natural/Ivy | Natural/Navy | Natural / Black | TOTAL | | |
|------------|---------|---------|---------|---------|---------|-------------|--------------|-----------------|-------|--|----|
| BALL CAP | \$13.00 | \$13.00 | \$13.00 | \$13.00 | \$13.00 | \$13.00 | \$13.00 | \$13.00 | | | \$ |

| UnStructured | Navy | Black | White | Red | Wheat | Burnt Orange | Columbia Blue | TOTAL | | | |
|--------------|---------|---------|---------|---------|---------|--------------|---------------|-------|--|--|----|
| BALL CAP | \$13.00 | \$13.00 | \$13.00 | \$13.00 | \$13.00 | \$13.00 | \$13.00 | | | | \$ |

NAME: _____
 ADDRESS: _____
 CITY/STAE/ZIP _____
 POINT OF CONTACT _____
 PHONE _____
 SIGNATURE _____

Due to customization of material, your signature on this order form indicates your acceptance of the size and color you ordered regardless of fit. These garments are within industry standards, but please remember to use washing instructions. No orders will be filled without signature and/or amount due, payable by check. \$30.00 charge for all returned checks.

| Two-Tone Bill | Black / Red | TOTAL | |
|---------------|-------------|-------|--|
| BALL CAP | \$16.00 | | |

PLEASE MAKE CHECK PAYABLE TO :DATCO INC.

WOMEN'S ORDER FORM



HiRISE

☒☒ DATCO SPORTS INC ☒ www.datcosports.com ☒ datcosports@comcast.net ☒ 1-888-22DATCO ☒☒

| LADIE'S SHIRT | XS \$32.00 | S \$32.00 | M \$32.00 | L \$32.00 | XL \$32.00 | 2XL \$32.00 | | | | | TOTAL |
|---------------|---------------|--------------|--------------|--------------|---------------|----------------|--|--|--|--|-------|
| Butter | | | | | | | | | | | \$ |
| Bimini Blue | | | | | | | | | | | |
| | | | | | | | | | | | \$ |

Available Colors: **Black, White, Navy Blue, Lavender, Bright Red**

| LADIE'S SCOOP NECK | \$28.00 | \$28.00 | \$28.00 | \$28.00 | \$28.00 | \$28.00 | \$29.00 | | | | TOTAL |
|--------------------|---------|---------|---------|---------|---------|---------|---------|--|--|--|-------|
| Black | | | | | | | | | | | \$ |
| | | | | | | | | | | | \$ |

Available Colors: **Carol Blue, Chocolate, Frost Pink, Frost Sky, Heather Gray, Hot Pink, Navy, Red, Yellow Haze Aloe**

NAME: _____
 ADDRESS: _____
 CITY/STAE/ZIP _____
 POINT OF CONTACT _____
 PHONE _____
 SIGNATURE _____

Due to customization of material, your signature on this order form indicates your acceptance of the size and color you ordered regardless of fit. These garments are within industry standards, but please remember to use washing instructions. No orders will be filled without signature and/or amount due, payable by check. \$30.00 charge for all returned checks.

TOTAL

PLEASE MAKE CHECK PAYABLE TO : DATCO INC.